

Sant Michael Church, Berlin



Alexandra, Dimitra, Clémentine

The Sant Michael Church

- ❖ A memorial of WWII and the cold war



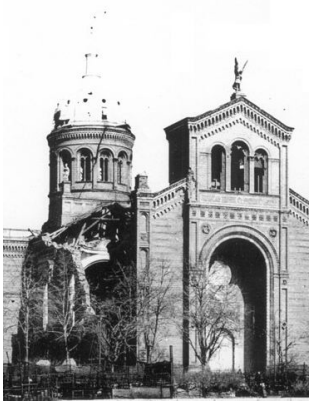
- ❖ A religious monument



- ❖ A biodiversity sanctuary



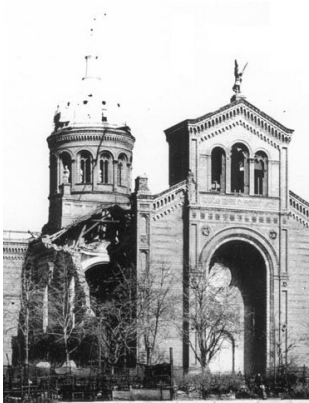
Our proposal



A monument of history

- ✓ Illuminate the front and back facade
- ✓ Use dramatic contrasts

Our proposal



A monument of history

- ✓ Illuminate the front and back facade
- ✓ Use dramatic contrasts



A monument of religion and peace

- ✓ Keep Archangel Michael illuminated
- ✓ Illuminate the cross at the top of the dome
- ✓ Illuminate the front arc and the mosaic

Our proposal



A monument of history

- ✓ Illuminate the front and back facade
- ✓ Use dramatic contrasts



A monument of religion and peace

- ✓ Keep Archangel Michael illuminated
- ✓ Illuminate the cross at the top of the dome
- ✓ Illuminate the front arc and the mosaic



A wildlife sanctuary

- ✓ Keep the central part of the church dark
- ✓ Use low-intensity amber lighting and warm white
- ✓ Limit the duration of lighting (turned-off at 22h00 winter, 23h summer)

Our proposal



A monument of history

- ✓ Illuminate the front and back facade
- ✓ Use dramatic contrasts



A monument of religion and peace

- ✓ Keep Archangel Michael illuminated
- ✓ Illuminate the cross at the top of the dome
- ✓ Illuminate the front arc and the mosaic



A wildlife sanctuary

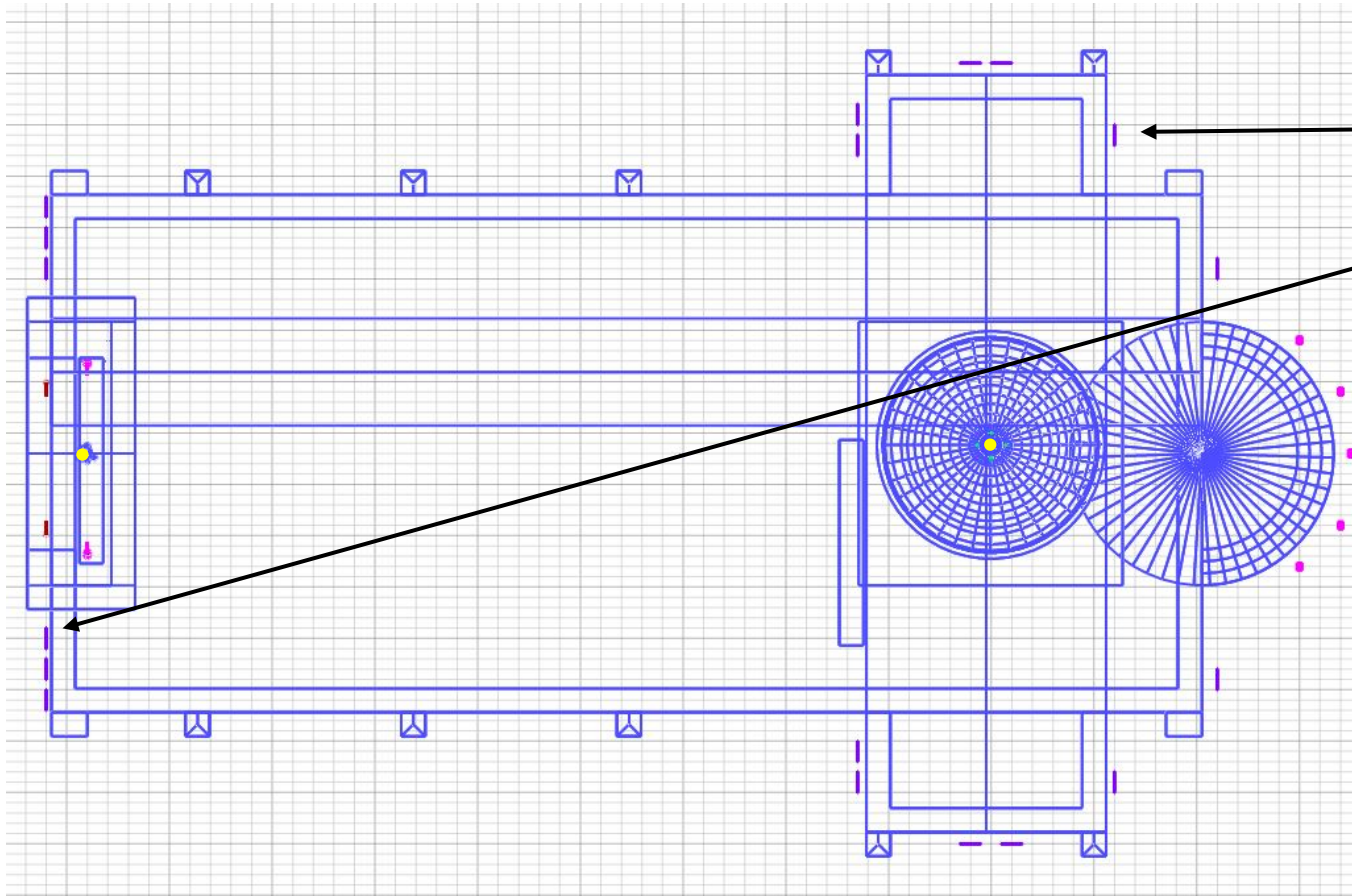
- ✓ Keep the central part of the church dark
- ✓ Use low-intensity amber lighting and warm white
- ✓ Limit the duration of lighting (turned-off at 22h00 winter, 23h summer)



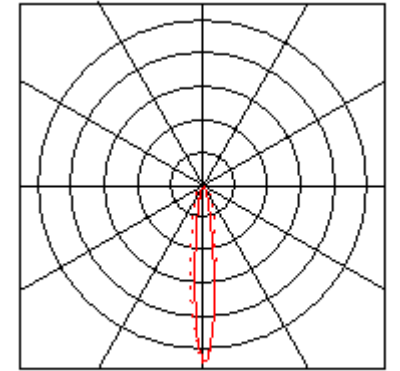
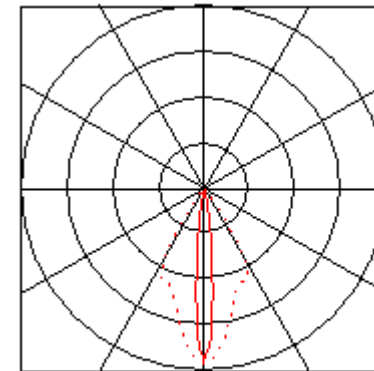
An illumination
that respects
darkness integrity
while enhancing
monument's
spirituality and
historical value

Our proposal

➤ Floor plan



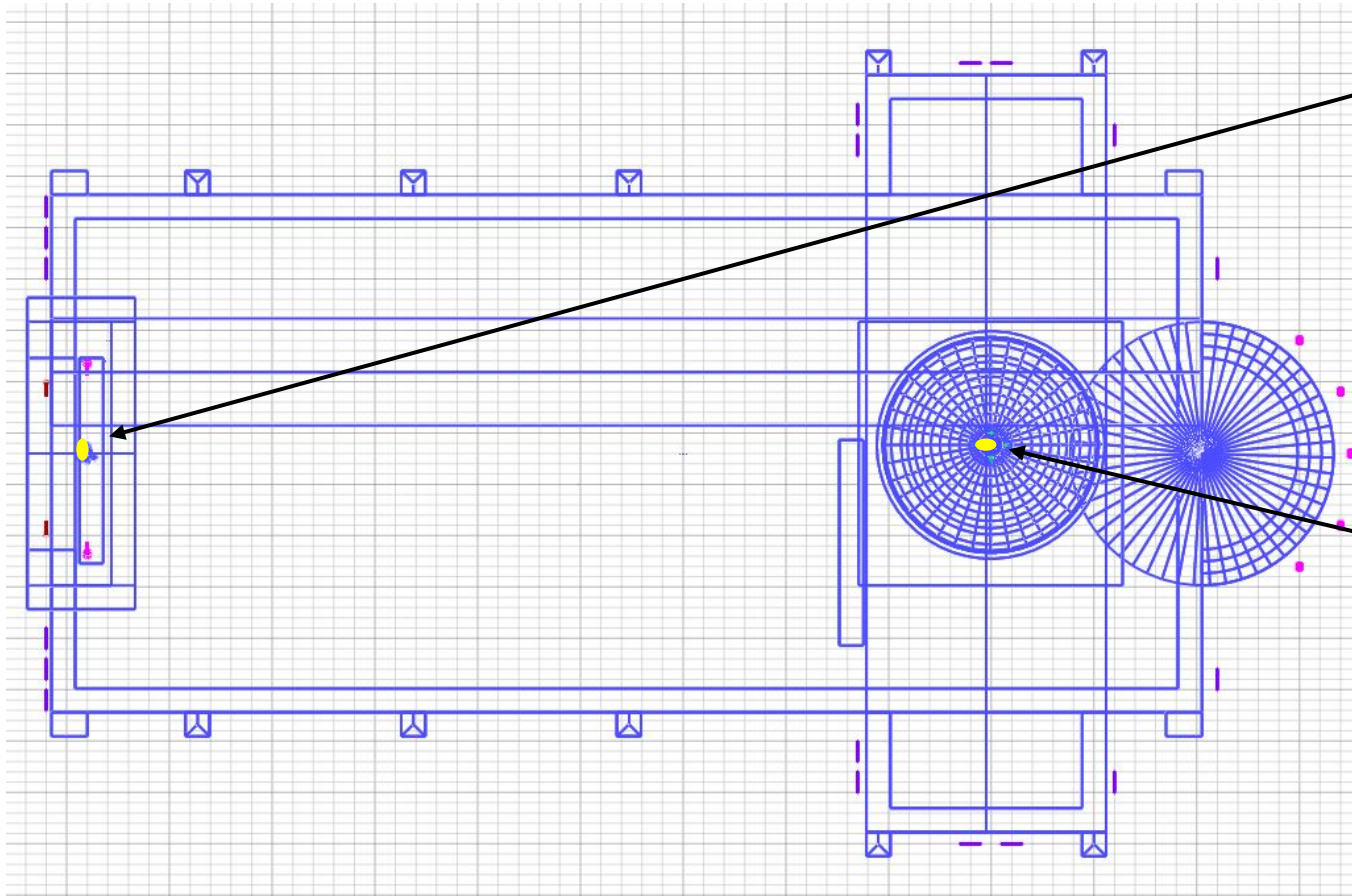
Linealus Mini
LED
6.5 W
Amber lighting



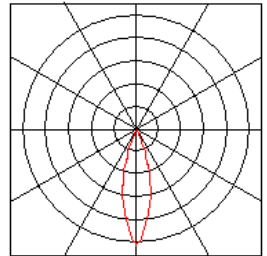
Illumination of the facades

Our proposal

➤ Floor plan



Woody
Spotlight
LED
12W
Warm-white

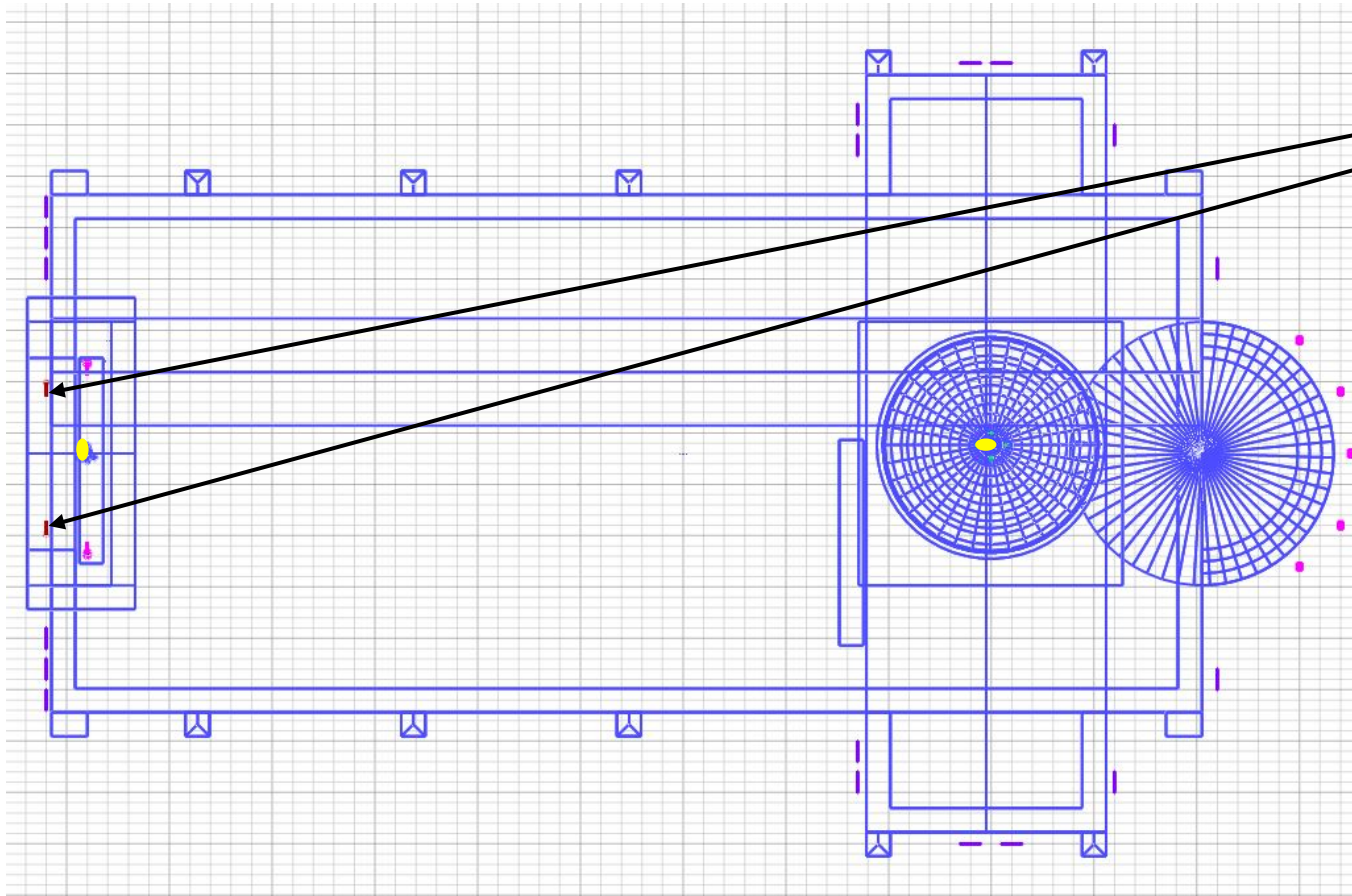


GlimCube
Spotlight with bracket
LED
53W
Warm-white

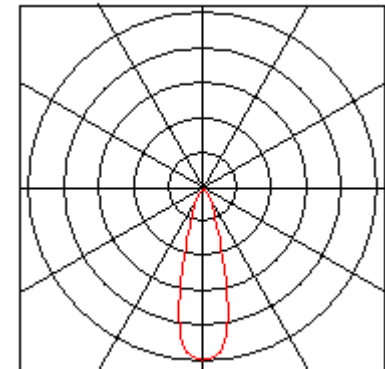
Illumination of the archangel and the cross

Our proposal

➤ Floor plan



MaxiWoody
Spotlight with bracket
LED
53W
Warm-white

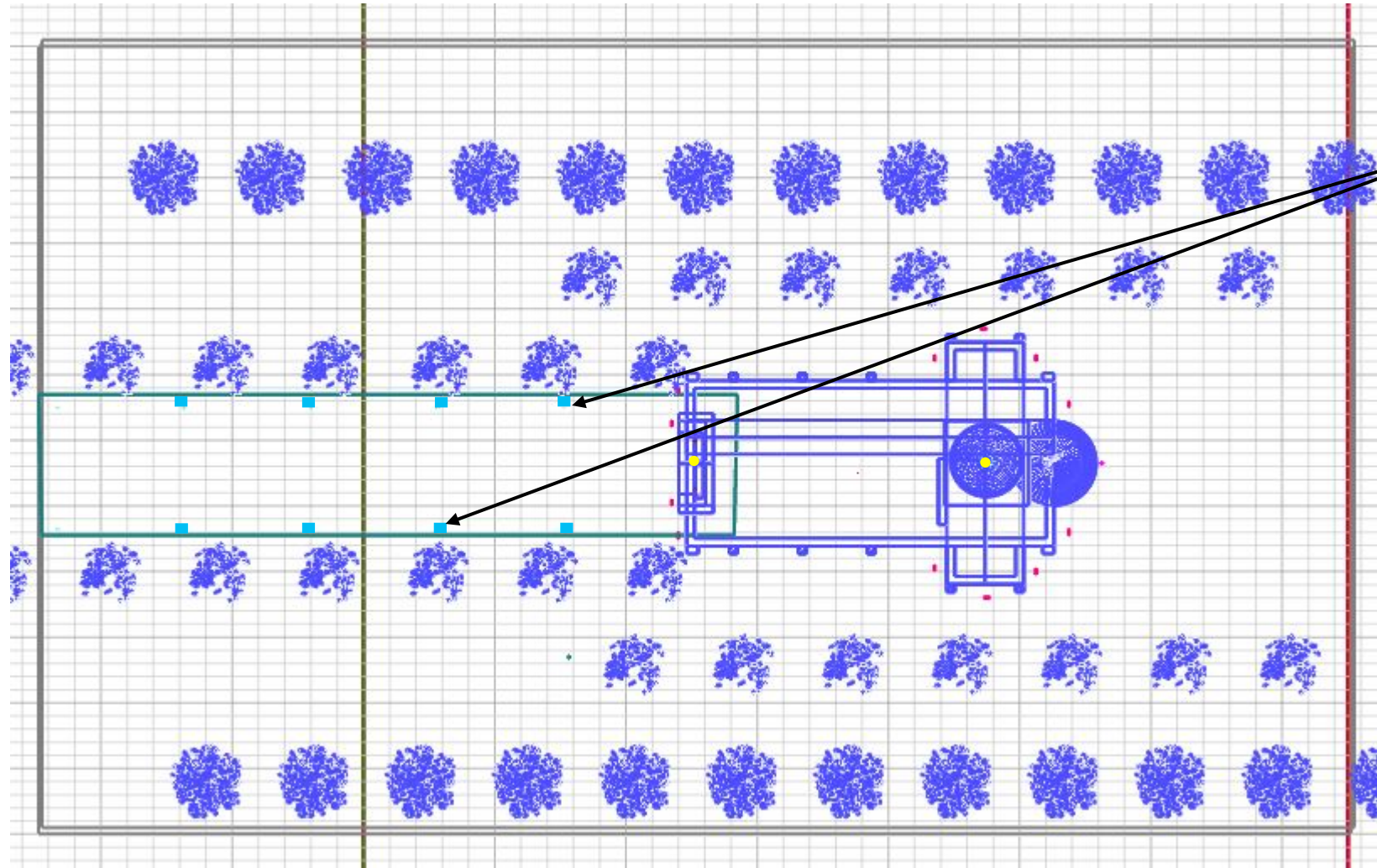


Illumination of the front arc

Our proposal

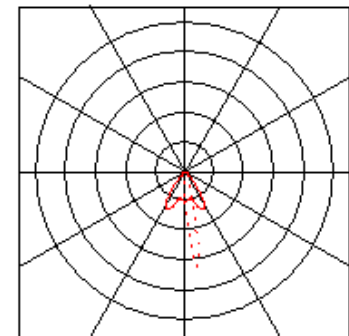
➤ Floor plan

SIMES
luce per l'architettura



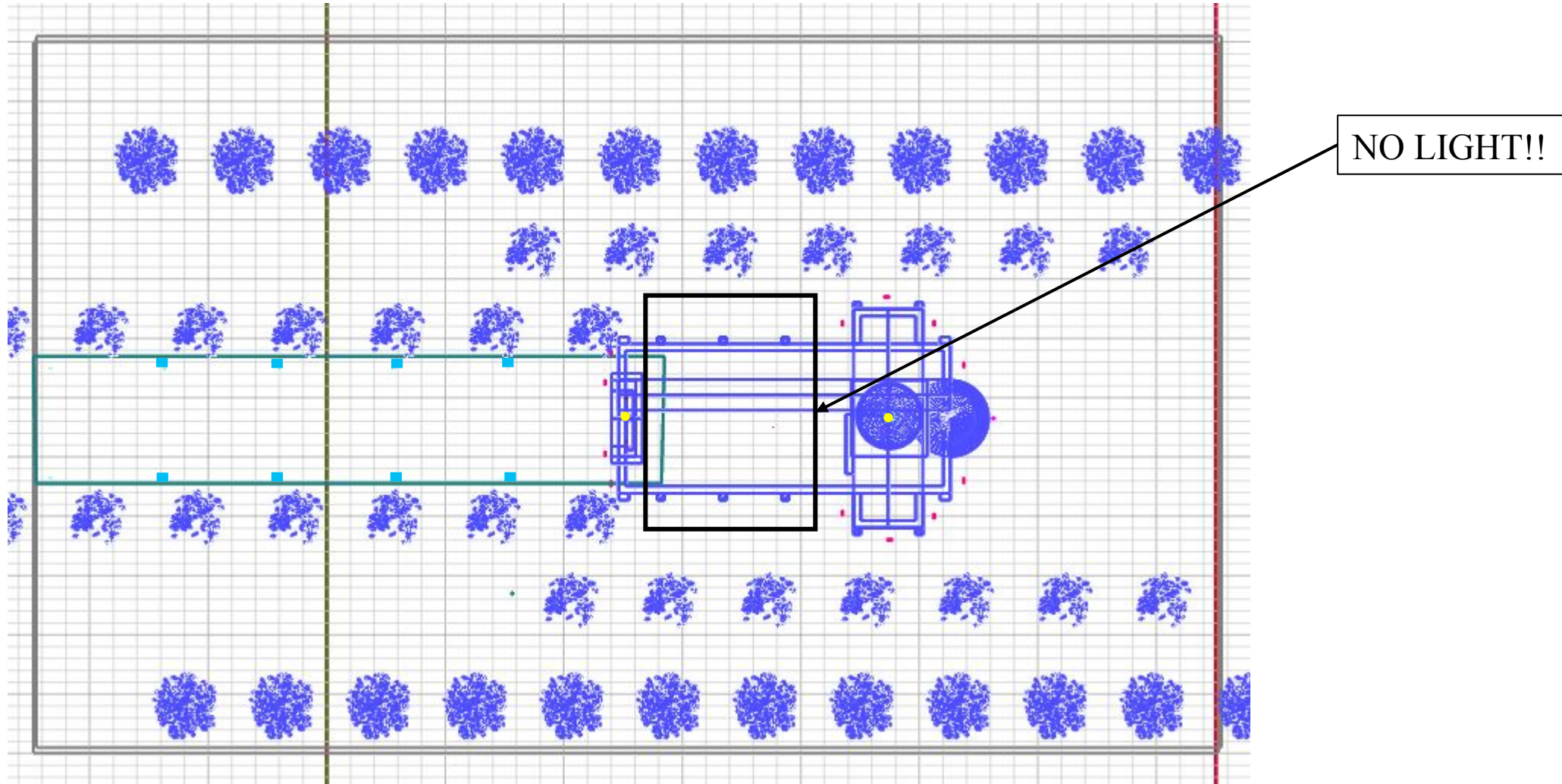
Illumination of the main alley

Wandleuchte LINK
LED
12,5W
Warm-white



Our proposal

➤ Floor plan



Non-Illumination of the sanctuary

Our proposal

- **A Monument of History:** Illumination of the two facades



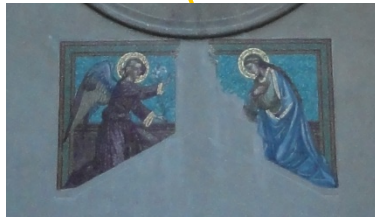
Front facade



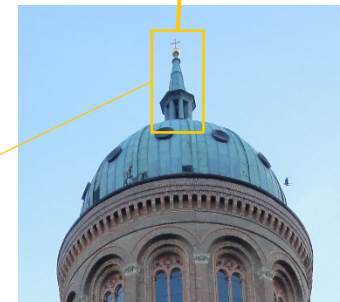
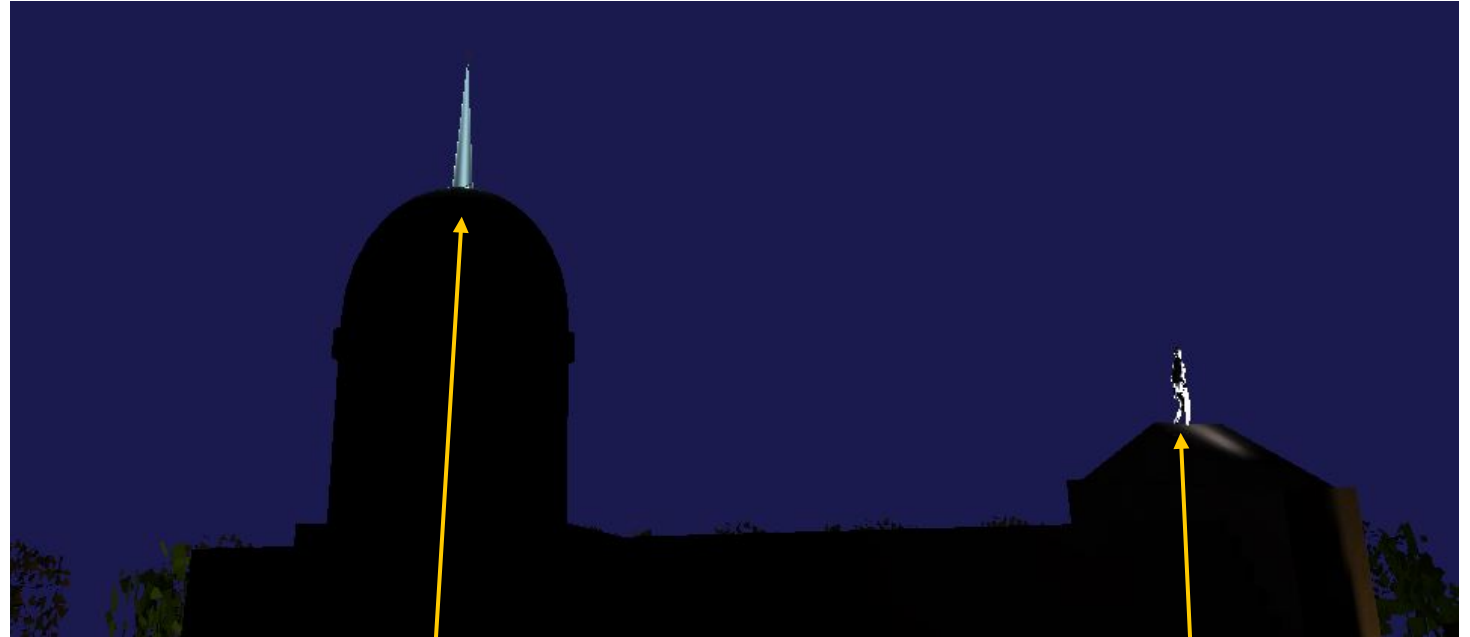
Back facade

Our proposal

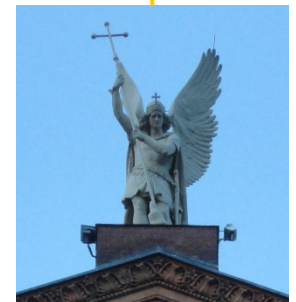
- **A Monument of religion:** Warm-white illumination of the archangel, the top-cross and the voute



The arc and the mosaic



The cross at the top of the dome



The archangel Michael

Our proposal

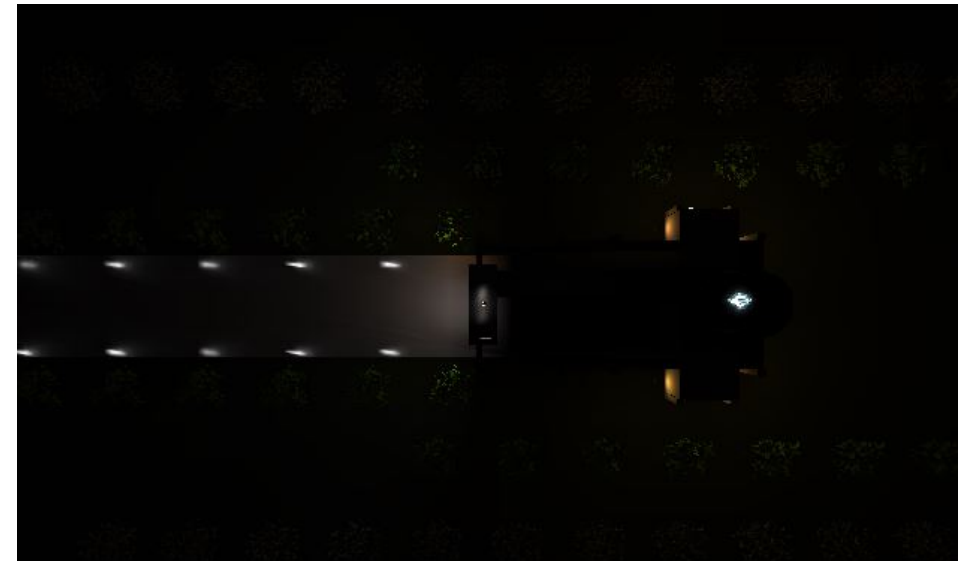
- **A wildlife sanctuary:** areas of darkness



Aerial view
limited light pollution emitted
toward the sky



Leftward view
Dark refugia at the center of
the monument



Conclusion

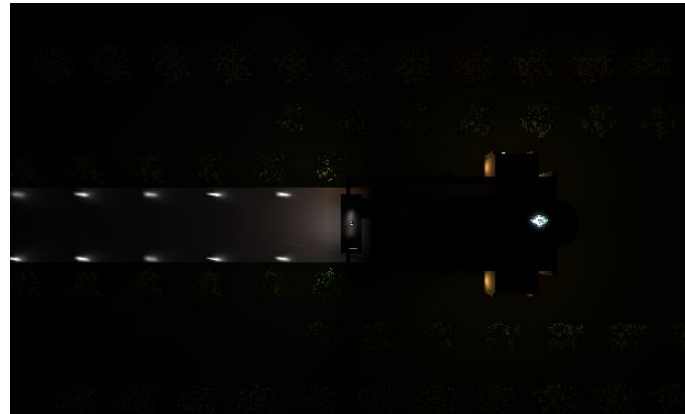


Bikers, drivers, walkers from the surroundings may rediscover this monument of history from different point of vue

Conclusion



Bikers, drivers, walkers from the surroundings may rediscover this monument of history from different point of vue

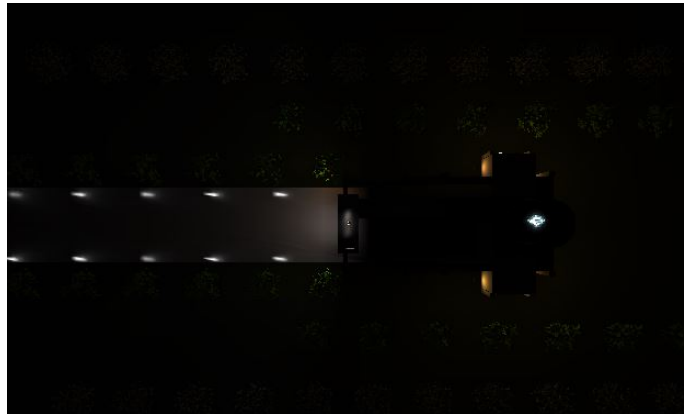


Non intrusive light pollution for residents

Conclusion



Bikers, drivers, walkers from the surroundings may rediscover this monument of history from different point of vue



Non intrusive light pollution for residents



And of course, happy bats!